

GODZILLA

PLUSH



a free embroidery design by



GODZILLA PLUSH

EMBROIDERY DESIGN

OVERVIEW

These embroidery files contain the eye, muzzle, and ITH sewing designs for the **GODZILLA PLUSH SEWING PATTERN**.



EYES

Stitches out the eyes for the **EYE PANELS (A)**.

FITS: hoops 4" x 4" and above



MUZZLE

Stitches out the mouth, teeth, and nostrils for the **MUZZLE (B)**.

FITS: hoops 4" x 4" and above



ITH SEWING

In-the-hoop sewing files for the **BACK SPIKES (I)**, **CLAWS (L)**, **EYEBROWS (N)**, and **EARS (D)**.

FITS: hoops 4" x 4" and above

MATERIALS & TOOLS:

- **4x4 VERSION:**
 - 8" x 7" piece of fabric for **EYE PANELS (A)**
 - 7" x 7" piece of fabric for **MUZZLE (B)**
- **5x7 VERSION:**
 - 11" x 9" piece of fabric for **EYE PANELS (A)** and **MUZZLE (B)**
- Four 6" x 6" pieces of fabric for **BACK SPIKES (I)**
- Two 6" x 6" pieces of fabric for **CLAWS (L)**
- Two 6" x 6" pieces of fabric for **EYEBROWS (N)** and **EARS (D)**
- yellow thread for eyes
- black thread for pupils and mouth
- white thread for eye shines and teeth
- medium to heavy-weight cut-away stabilizer
- water soluble top stabilizer (if using minky)
- basic embroidery tools: (embroidery machine, embroidery scissors, spray adhesive, bobbin thread, sewing needles, embroidery hoops, masking tape)

sew desu ne?

| WWW.CHOLYKNIGHT.COM |

// ©2025 Choly Knight // Items sewn using this design may be sold. Credit to "Choly Knight" or "Sew Desu Ne?" is appreciated. You may not reproduce, share, freely distribute, or sell this design as your own in digital or printed form.



EYES 4X4:

SIZE:

89mm x 78mm (3.5 in x 3.1 in)

COLORS:

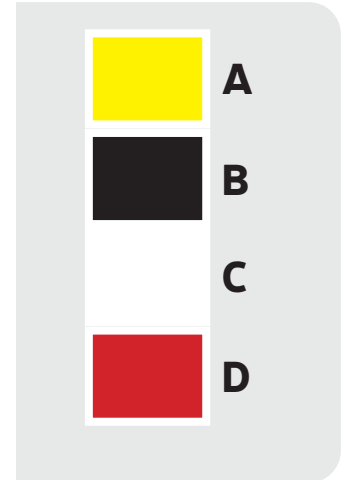
Colors needed: 3

- eyes
- pupils
- eye shines

Color changes: 4

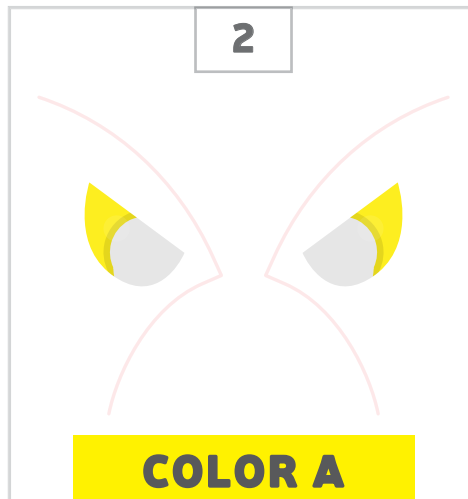
FABRIC:

- 8" x 7" piece of fabric for **EYE PANELS (A)**



HOOP YOUR FABRIC

- Hoop your **EYE PANEL (A)** fabric and cut-away stabilizer into an embroidery hoop 4" x 4" or larger.
- Hoop water-soluble stabilizer with the fabric, or tape it on afterwards.



EYE

- Yellow is the character accurate color to use here.



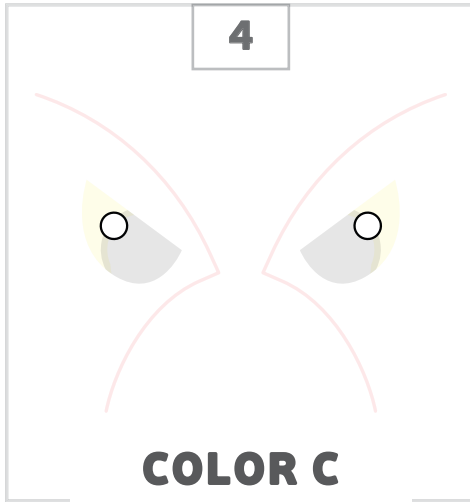
PUPIL

- Black would work best here.

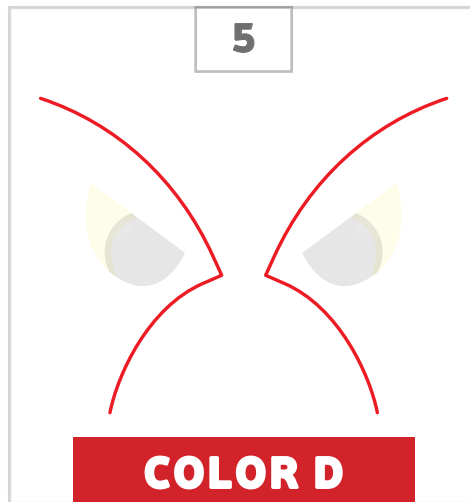
sew desu ne?

| WWW.CHOLYKNIGHT.COM |

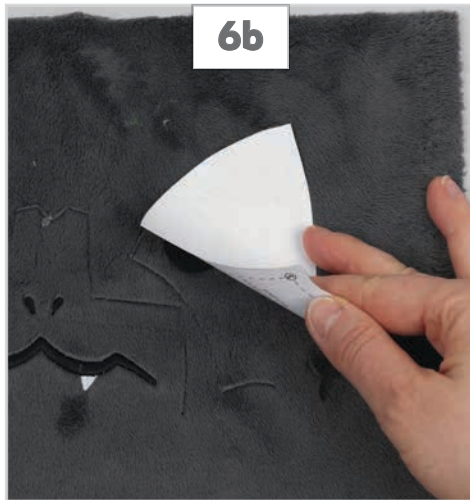
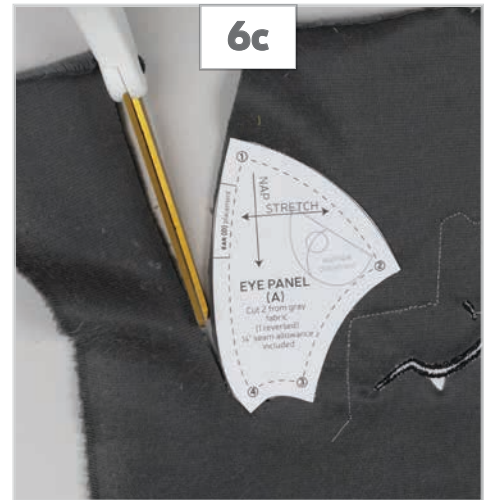
/// ©2025 Choly Knight /// Items sewn using this design may be sold. Credit to "Choly Knight" or "Sew Desu Ne?" is appreciated. You may not reproduce, share, freely distribute, or sell this design as your own in digital or printed form.

**COLOR C****EYE SHINE**

- White would work well here.

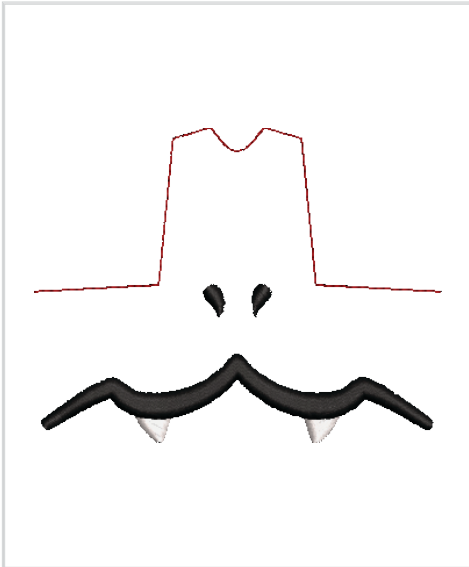
**COLOR D****ALIGNMENT GUIDE**

- Any color can be used for this.
- This stitches out a guideline for cutting the pattern piece.

**6a****6b****6c****CUT THE PATTERN**

- When finished embroidering, remove the hoop from the machine and trim the threads. Rip off the water-soluble stabilizer and cut away the backing stabilizer.
- Align the **EYE PANEL (A)** pattern onto the embroidery, matching up the paper with the alignment stitching.
- Pin the paper pattern in place (or trace the outline). Cut around the pattern. Use the fabric as usual with the rest of the project instructions.

sew desu ne?| WWW.CHOLYKNIGHT.COM |



MUZZLE 4X4:

SIZE:

93mm x 72mm (3.7 in x 2.8 in)

COLORS:

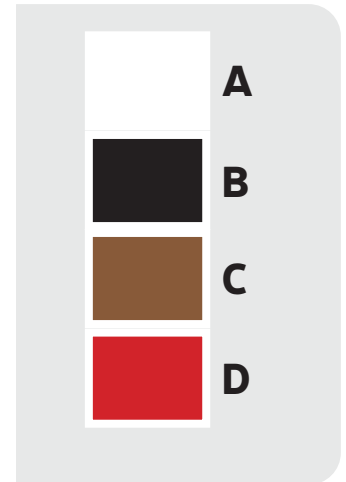
Colors needed: 2

- teeth
- mouth, nostrils

Color changes: 4

FABRIC:

- 7" x 7" piece of fabric for **MUZZLE (B)**



HOOP YOUR FABRIC

- Hoop your **MUZZLE (B)** fabric and cut-away stabilizer into an embroidery hoop 4" x 4" or larger.
- Hoop water-soluble stabilizer with the fabric, or tape it on afterwards.



TEETH

- White would work well here.



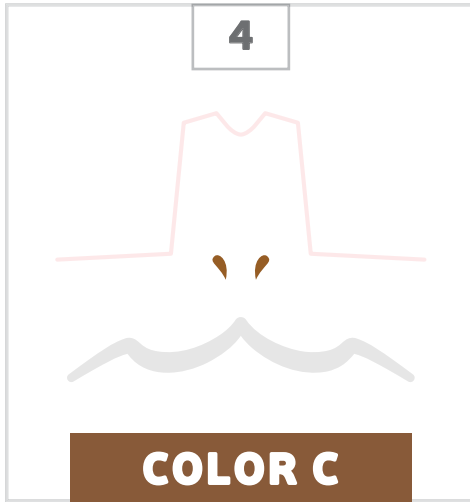
MOUTH

- Black or a very dark accent color would work well here.

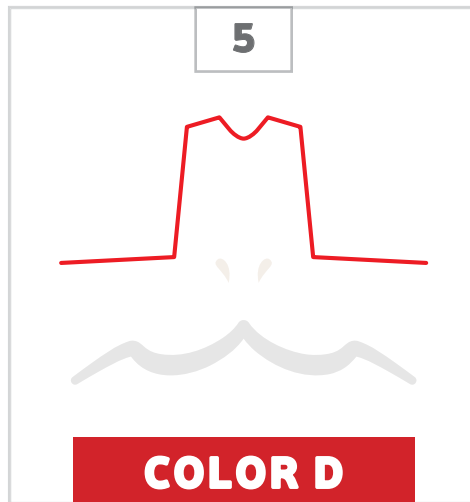
sew desu ne?

| WWW.CHOLYKNIGHT.COM |

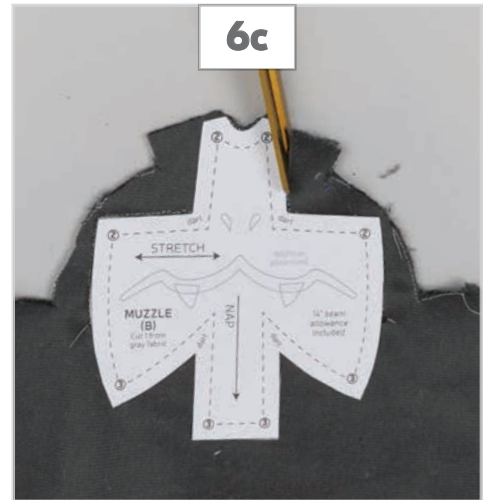
/// ©2025 Choly Knight /// Items sewn using this design may be sold. Credit to "Choly Knight" or "Sew Desu Ne?" is appreciated. You may not reproduce, share, freely distribute, or sell this design as your own in digital or printed form.

**NOSTRILS**

- Black or a very dark accent color would work well here.

**ALIGNMENT GUIDE**

- Any color can be used for this.
- This stitches out a guideline for cutting the pattern piece.

**CUT THE PATTERN**

- When finished embroidering, remove the hoop from the machine and trim the threads. Rip off the water-soluble stabilizer and cut away the backing stabilizer.
- Align the **MUZZLE (B)** pattern onto the embroidery, matching up the paper with the alignment stitching.
- Pin the paper pattern in place (or trace the outline). Cut around the pattern. Use the fabric as usual with the rest of the project instructions.

sew desu ne?

| WWW.CHOLYKNIGHT.COM |

// ©2025 Choly Knight // Items sewn using this design may be sold. Credit to "Choly Knight" or "Sew Desu Ne?" is appreciated. You may not reproduce, share, freely distribute, or sell this design as your own in digital or printed form.



EYES & MUZZLE 5X7:

SIZE:

174mm x 114mm (6.9 in x 4.5 in)

COLORS:

Colors needed: 3

- eyes
- pupils, mouth, nostrils
- eye shines, teeth

Color changes: 7

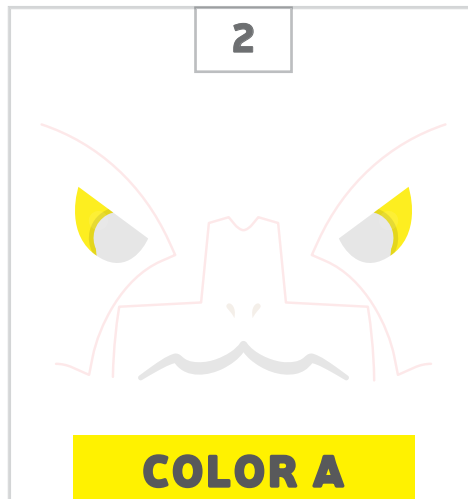
FABRIC:

- 11" x 9" piece of fabric for **EYE PANELS (A)** and **MUZZLE (B)**



HOOP YOUR FABRIC

- Hoop your **EYE PANEL (A)** and **MUZZLE (B)** fabric and cut-away stabilizer into an embroidery hoop 4" x 4" or larger.
- Hoop water-soluble stabilizer with the fabric, or tape it on afterwards.



EYE

- Yellow is the character accurate color to use here.



PUPIL

- Black would work best here.

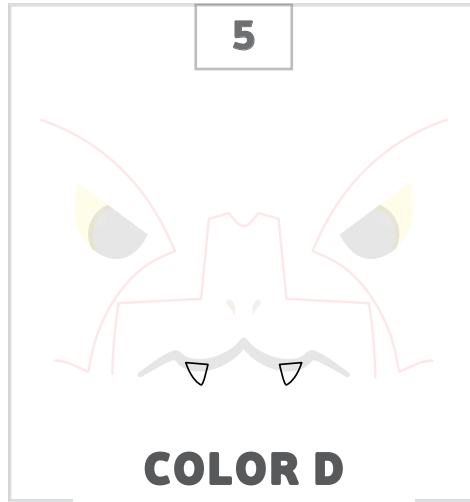
sew desu ne?

| WWW.CHOLYKNIGHT.COM |

/// ©2025 Choly Knight /// Items sewn using this design may be sold. Credit to "Choly Knight" or "Sew Desu Ne?" is appreciated. You may not reproduce, share, freely distribute, or sell this design as your own in digital or printed form.

**COLOR C****EYE SHINE**

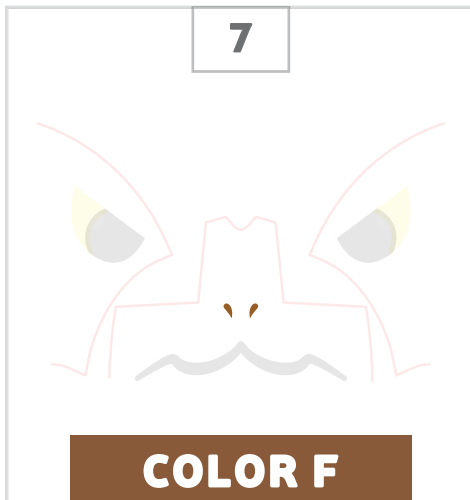
- White would work well here.

**COLOR D****TEETH**

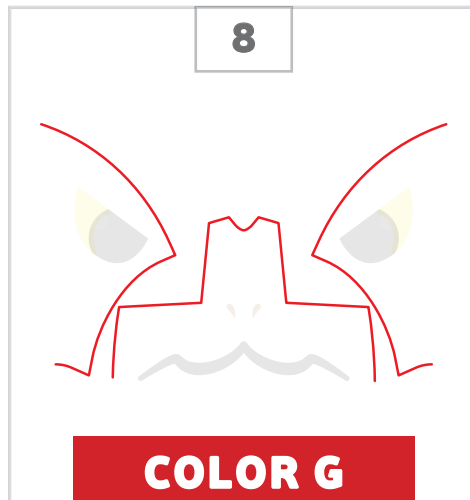
- White would work well here.

**COLOR E****MOUTH**

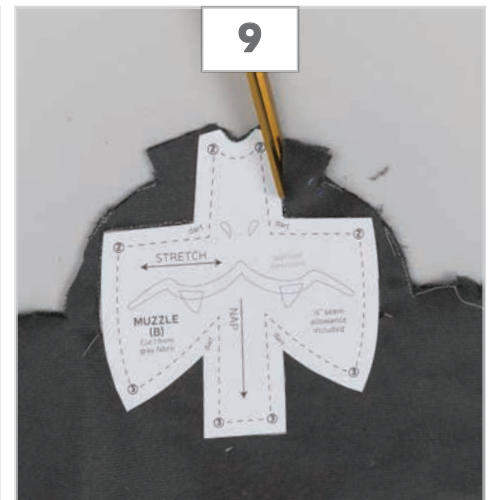
- Black or a very dark accent color would work well here.

**COLOR F****NOSTRILS**

- Black or a very dark accent color would work well here.

**COLOR G****ALIGNMENT GUIDE**

- Any color can be used for this.
- This stitches out a guideline for cutting the pattern piece.

**CUT THE PATTERN**

- Remove the hoop and stabilizers.
- Align the **EYE PANEL (A)** and **MUZZLE (B)** pattern onto the embroidery.
- Cut around the pattern.

sew desu ne?| WWW.CHOLYKNIGHT.COM |

ITH PATTERN PIECES

These in-the-hoop files will stitch out the **BACK SPIKES (I)**, **EYEBROWS (N)**, **EARS (D)**, and **CLAWS (L)**.

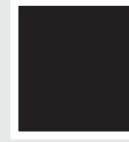
Because these files have nearly identical instructions and colors, they're grouped together here for efficiency.

COLORS:

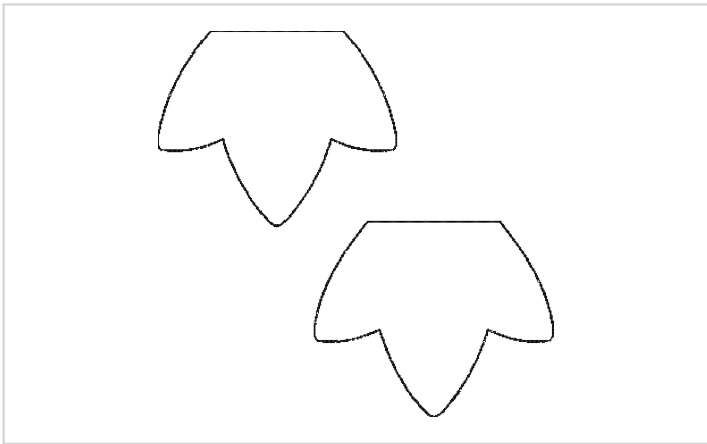
Colors needed: 1

- stitching line

Color changes: 1



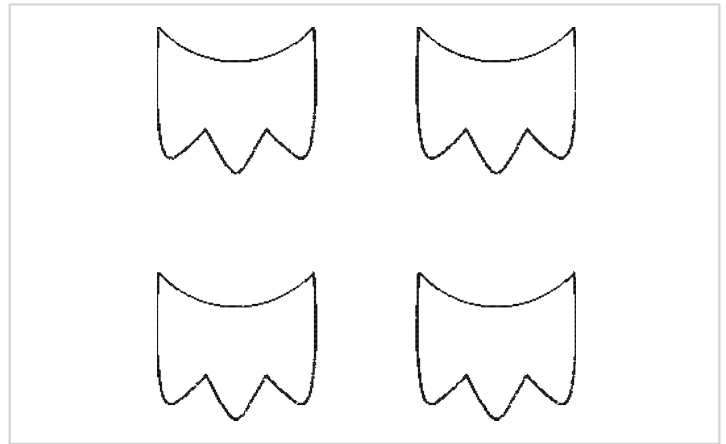
A



ITH BACK SPIKES

SIZE: 93mm x 90mm (3.7 in x 3.5 in)

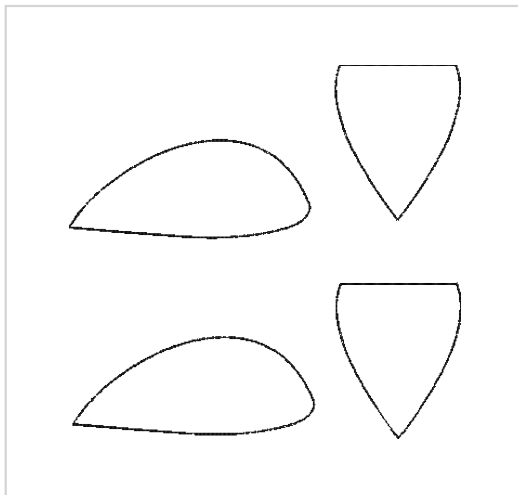
FABRIC: Four 6" x 6" pieces of fabric for **BACK SPIKES (I)**



ITH CLAWS

SIZE: 85mm x 79mm (3.3 in x 3.1 in)

FABRIC: Two 6" x 6" pieces of fabric for **CLAWS (L)**



ITH EYEBROWS & EARS

SIZE: 96mm x 91mm (3.8 in x 3.6 in)

FABRIC: Two 6" x 6" pieces of fabric for **EYEBROWS (N) AND EARS (D)**

sew desu ne?

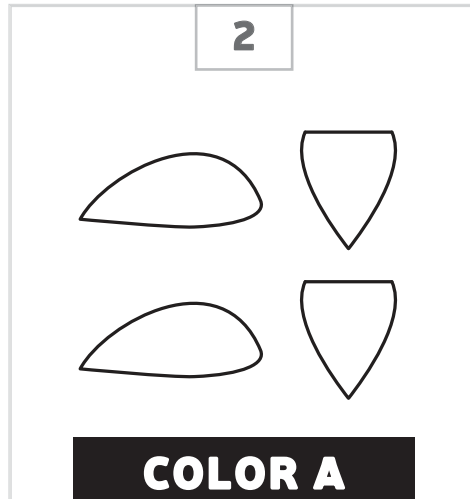
| WWW.CHOLYKNIGHT.COM |

// ©2025 Choly Knight // Items sewn using this design may be sold. Credit to "Choly Knight" or "Sew Desu Ne?" is appreciated.
You may not reproduce, share, freely distribute, or sell this design as your own in digital or printed form.



HOOP YOUR FABRIC

- Hoop two of your fabrics layered together with right sides facing.
- Tear-away stabilizer works best for this to reduce bulk.
- There is no need to use any top stabilizer here.



STITCHING LINE

- Use a color that matches your main fabric for the best results here.



CUT THE FABRIC

- Remove the hoop from the machine and trim the threads. Rip off the water-soluble stabilizer and tear away the backing stabilizer.
- Trim the excess fabric about $\frac{1}{8}$ " away from the stitching line.
- Your piece may have an edge where the stitches get very long. This is the edge for the opening for turning. To turn the piece, cut just inside the stitches to cut them off. That will leave an opening for turning the fabric.
- Use the fabric as usual with the rest of the project instructions.

sew desu ne?

| WWW.CHOLYKNIGHT.COM |

// ©2025 Choly Knight // Items sewn using this design may be sold. Credit to "Choly Knight" or "Sew Desu Ne?" is appreciated. You may not reproduce, share, freely distribute, or sell this design as your own in digital or printed form.